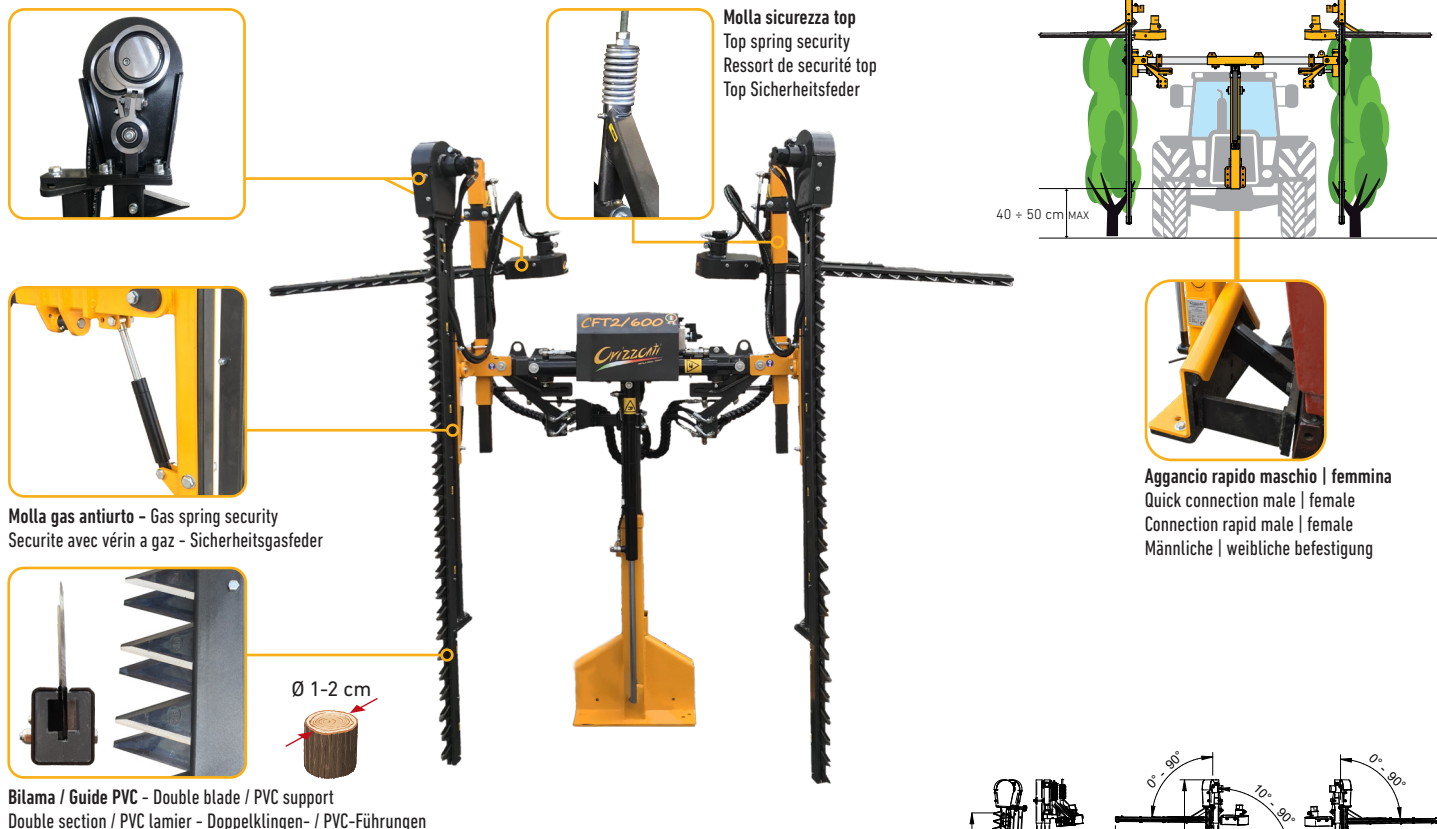


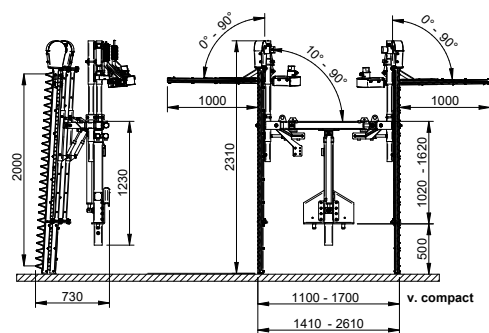
CFT2 600

Cimatricce a colonna fissa doppia bilama - Double blade trimmer with fix column
 Rogneuse double à structure fix a section - Zweiseitiger überzeilen laubschneider



Dati tecnici | Technical data | Fiche technique | Technische Daten

MOD.	MIN cm v.compact	cm v.compact	MIN cm	MAX cm	Kg
CFT2 600	180	30+30	220	60+60	310



COD.	Movimenti - Movements - Mouvements - Bewegungen	Levers	Joystick	Distributor	Oil - Pressure
103222J	7+1 + ON/OFF MOTOR			30 lt/min 180 bar max	
103221L	5+1 + ON/OFF MOTOR			30 lt/min 180 bar max	
103221J	5+1 + ON/OFF MOTOR			30 lt/min 180 bar max	
103223L	5+1 v.compact + ON/OFF MOTOR			30 lt/min 180 bar max	
103223J	5+1 v.compact + ON/OFF MOTOR			30 lt/min 180 bar max	

STAFFE PER TRATTORI E SERBATOI - TRACTOR BRACKETS AND OIL TANKS - SUPPORTS ET RÉSERVOIRS DE TRACTEUR - TRAKTORHALTERUNGEN UND TANKS Pag. 59

OPTIONAL	Descrizione - Description - Description - Beschreibung	
1A32200	2 Convogliatori alzatralci idraulici - 2 Hydraulic conveyors 2 Convoyeur hydrauliques - 2 Hydraulische Hebebänder	
1A3234	2 Martinetti alzata verticale topping a innesti rapidi H. = 40 cm - 2 Vertical topping lift with quick connections H. = 40 cm 2 Control vertical top avec raccords rapides H. = 40 cm - 2 Vertikale Hubheber mit Schnellkupplungen H. = 40 cm	+2